

KEY FEATURES

- Energy saving night blind
- Models for dairy products or meat
- Panoramic end walls
- Slim version, ideal for small spaces
- Ticket strips

EXTRA SPEC DETAILS

- Power Required – 13 amp
- Automatic Defrost
- Refrigerant – R290
- Refrigeration system – Fan assisted evaporator & condenser
- Exterior Finish – Stainless steel
- Interior Finish – Stainless Steel
- Maximum Ambient Temperature - 25°C / 60% RH

OPTIONAL EXTRAS

- Glass doors
- Castors (Add 75mm to height)
- Shelf edge risers
- Pin pack bars and hooks
- Product dividers
- Glass shelves
- Factory fit option
- Multiplexing
- Mirrored end walls
- Undershelf lighting for better product illumination



Slimline Stainless Steel Multideck Displays



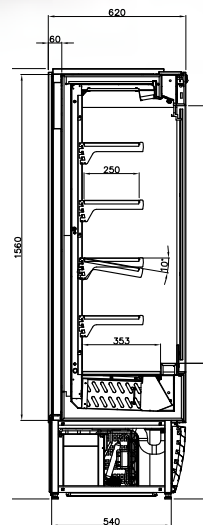
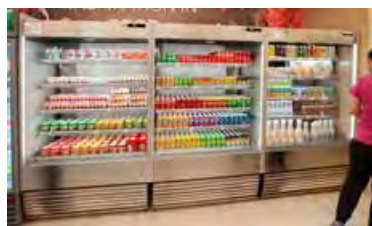
United Chilled Slimline & Standard



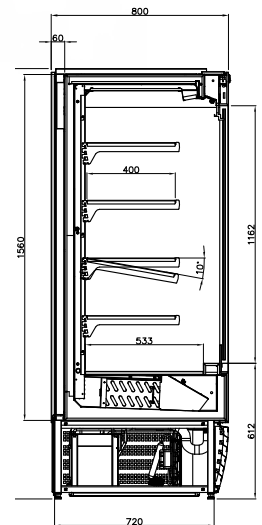
1250MM WIDE



OPTION OF GLASS DOORS



Slimline



Standard

Slimline

Model	Dimensions (wxdxh) mm	Temperature	Shelves	Display Surface	See Price List
VMU62L-CG - 625	685 x 620 x 1941	+3 / 6°C	4	0.72m ²	
VMU62L-CG - 937	997 x 620 x 1941	+3 / 6°C	4	1.09m ²	
VMU62L-CG - 1250	1310 x 620 x 1941	+3 / 6°C	4	1.45m ²	
VMU62L-CG - 1562	1622 x 620 x 1941	+3 / 6°C	4	1.81m ²	
VMU62L-CG - 1875	1935 x 620 x 1941	+3 / 6°C	4	2.17m ²	

Standard

Model	Dimensions (wxdxh) mm	Temperature	Shelves	Display Surface	See Price List
VMU80L-CG 625	685 x 800 x 1941	+3 / 6°C	4	0.72m ²	
VMU80L-CG 937	997 x 800 x 1941	+3 / 6°C	4	1.09m ²	
VMU80L-CG 1250	1310 x 800 x 1941	+3 / 6°C	4	1.45m ²	
VMU80L-CG 1562	1622 x 800 x 1941	+3 / 6°C	4	1.81m ²	
VMU80L-CG 1875	1935 x 800 x 1941	+3 / 6°C	4	2.17m ²	
VMU80L-CG 2500	2560 x 800 x 1941	+3 / 6°C	4	2.9m ²	