



UTENSIL WASHER UX-600BC 230-400/50/3N DD

Rack size 600 mm x 630 mm and door clearance 650 mm. Constant temperature rinsing system.

1303508



Equipment: supplementary trays: 1
Useful height: 650 mm
Cycles: 5

Electrical supply: / 50 Hz /

Loading

- ✓ Pump: 3 Hp / 2200 W
- ✓ Tank: 6000 W
- ✓ Boiler: 9000 W
- ✓ Total loading: 11200 W

Feed water temperature: 10°C - 60°C

Wash temperature: 40°C - 70°C

Rinse temperature: 65°C - 87°C

Wash tank capacity: 55 l

Boiler capacity: 12 l

Water consumption/cycle: 3.5 l

Drainage base maximum height: 185 mm

Drain diameter: 30 mm

External dimensions (W x D x H)

- ✓ Width: 742 mm
- ✓ Depth (closed): 852 mm
- ✓ Depth (open): 1232 mm
- ✓ Height (closed): 1840 mm
- ✓ Height (open): 2035 mm

Net weight: 168 kg

Noise level (1m.): 76 dB(A)

Crated dimensions

790 x 980 x 1950 mm

Gross weight: 185 kg

SALES DESCRIPTION

Ideal to wash big sized pots and wares.

- ✓ Powerful and high pressure: specially indicated for restaurants, ice-cream shops, pastries and butcheries.
- ✓ Constructed from stainless steel.
- ✓ Door divided in two parts, perfectly counterbalanced, easy to handle.
- ✓ Double skinned machines: silent working and reduced thermal dispersions.
- ✓ Wash tank without corners to avoid dirt accumulation in angles.
- ✓ Stamped wash dispersers in stainless steel tubes.
- ✓ Easy to remove wash- and rinse dispersers.
- ✓ Safety micro switch at the door and electronic safety device to guarantee washing temperature and time.
- ✓ Advanced LCD control panel with humidity protection. Display of wash and rinse temperatures.
- ✓ Reduced water consumption.

INCLUDES

- ✓ 1 stainless steel basket and insert for 4 trays.
- ✓ Adjustable detergent dosing equipment.

OPTIONAL

- Stainless basket.
- Stainless carrier for trays.

ACCESSORIES

- Stainless steel baskets
- Dosing equipments
- Manual water softeners
- Carrier for trays
- Automatic water softeners

SPECIFICATIONS

Basket dimensions: 600 mm x 630 mm

Stainless steel basket: 1



WARE WASHING
POT WASHERS

product sheet
updated 22/01/2025

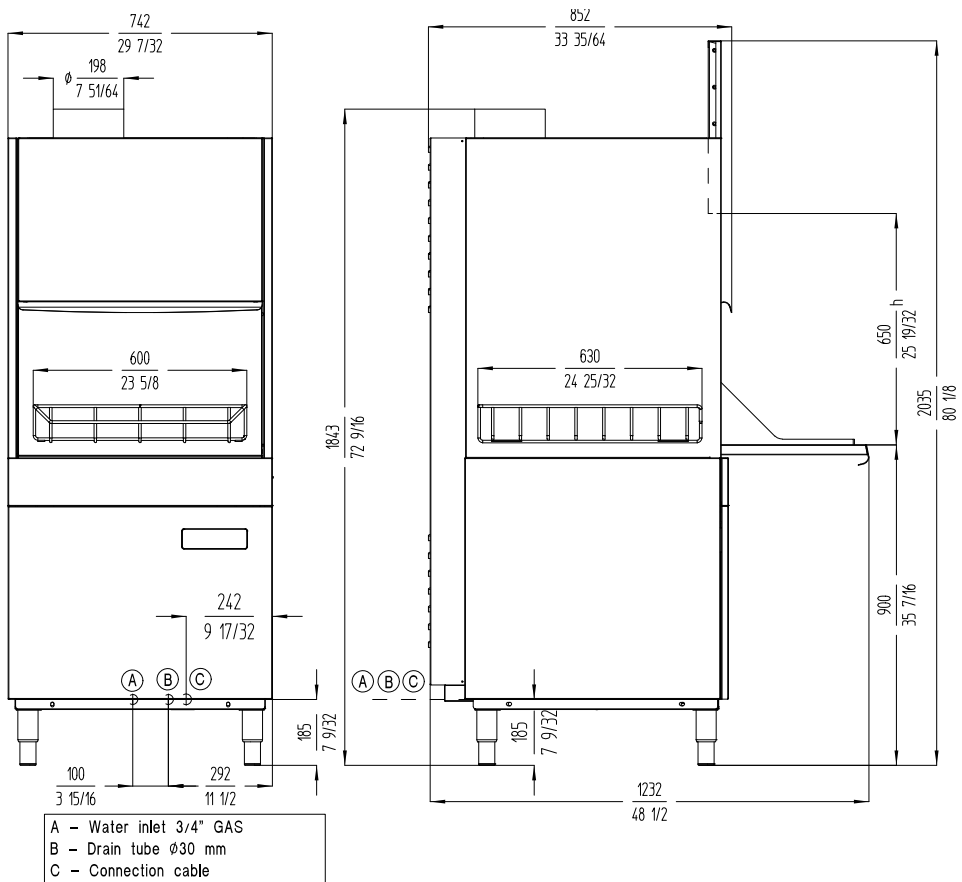


UTENSIL WASHER UX-600BC 230-400/50/3N DD

Rack size 600 mm x 630 mm and door clearance 650 mm. Constant temperature rinsing system.

1303508

WARE WASHING
POT WASHERS



www.sammic.co.uk

Food Service Equipment Manufacturer

Unit 2, Trevanah Road
Troon Industrial Park
LE4 9LS - Leicester

uksales@sammic.com
Tel.: +44 0116 246 1900



Project

Date

Item

Qty

Approved

product sheet
updated 22/01/2025