

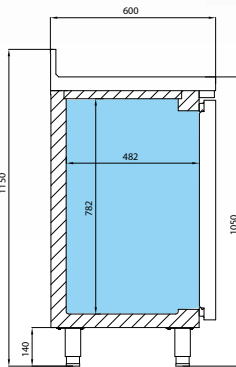
# Tall Back Bar Counter Series

600mm Depth

FMPP2000CR



FMPP2000



## FEATURES

- High grade AISI 304 stainless steel exterior & interior
- Supplied with 2 shelves per door (325 x 430mm)
- 2 neutral drawers above unit compartment
- Adjustable legs
- 100mm covered upstand
- Glass door model has vertical LED illumination
- Replaceable door gasket

## TECHNICAL SPECIFICATIONS

Controller:	Digital controller with temperature display
Cooling:	Ventilated
Defrost:	Automatic
Refrigerant:	R134a (R290 available - POA)
Climate Class	4
Temperature Range:	+1°C ~ +6°C
Power Supply:	13amp

MODEL	DOOR	SHELVES	GROSS CAPACITY	EXT. DIMENSIONS (H* x W x D mm)	ENERGY RATING	POWER CONSUMPTION	KWH /ANNUM	WEIGHT (kg)	RRP
FMPP1500	2	4	325L	1150* x 1468 x 600	B	190W	892	149	
FMPP2000	3	6	510L	1150* x 1960 x 600	B	430W	1019	189	
FMPP2500	4	8	695L	1150* x 2452 x 600	C	580W	1325	227	
FMPP1500CR	2	4	325L	1150* x 1468 x 600	-	450W	-	166	
FMPP2000CR	3	6	510L	1150* x 1960 x 600	-	610W	-	205	
FMPP2500CR	4	8	695L	1150* x 2452 x 600	-	630W	-	257	

\* Includes 100mm upstand

