



ESS900

Features and Benefits

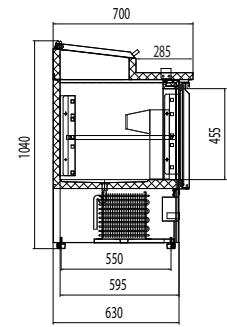
- Fully automatic
- Wet wall with fan assisted cooling
- Adjustable shelves
- Fitted with castors and adjustable feet. Removing castors will lower unit by 40mm
- Digital controller and temperature display
- Self closing doors
- Replaceable door gasket
- Accepts Gastronorm pans
- 1/1 Gastronorm cupboards
- ESS900 supplied with 5 x 1/6 GN pans 150mm deep
- ESS1365 supplied with 7 x 1/3 GN pans 150mm deep

Technical Specifications

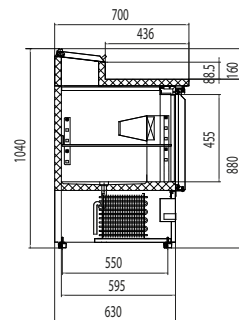
Temperature Range	+2/+10°C
Refrigerant	R600a
Type of Defrost	Off Cycle
Exterior Finish	Stainless Steel
Interior Finish	Stainless Steel
Power Required	13 Amp
Max Ambient	18°C to 43°C
Climate Class	T



ESS1365



ESS1365



ESS900

Model	Description	Dimensions (mm)			Kg	Gross Int. Volume	No. of Shelves	Price	Next Day	
		Ext. H	W	D						
ESS900	Stainless Steel	Ext.	1080	900	700	68	300ltr (10.59 cu.ft)	1 Per Door	£903	✓
		Int.	500	830	595					
ESS1365	Stainless Steel	Ext.	1080	1365	700	90	380ltr (13.41 cu.ft)	1 Per door	£1,382	✓
		Int.	500	1295	595					

Cabinet supplied with castors and feet fitted. Diagram shows height with feet, castors add 40mm to height.