



**ESS900**

### Features and Benefits

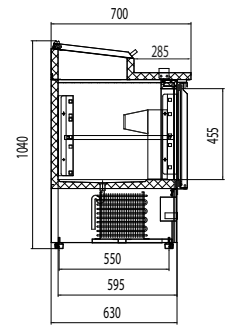
- Fully automatic
- Wet wall with fan assisted cooling
- Adjustable shelves
- Fitted with castors and adjustable feet. Removing castors will lower unit by 40mm
- Digital controller and temperature display
- Self closing doors
- Replaceable door gasket
- Accepts Gastronorm pans
- 1/1 Gastronorm cupboards
- ESS900 supplied with 5 x 1/6 GN pans 150mm deep
- ESS1365 supplied with 7 x 1/3 GN pans 150mm deep

### Technical Specifications

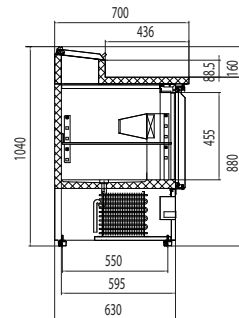
Temperature Range	+2/+10°C
Refrigerant	R134a
Type of Defrost	Off Cycle
Exterior Finish	Stainless Steel
Interior Finish	Stainless Steel
Power Required	13 Amp
Max Ambient	18°C to 43°C
Climate Class	T



**ESS1365**



ESS1365



ESS900

Cabinet supplied with castors and feet fitted. Diagram shows height with feet, castors add 40mm to height.

Model	Description	Dimensions (mm)			Kg	Gross Int. Volume	No. of Shelves	Price	Next Day	
		H	W	D						
ESS900	Stainless Steel	Ext.	1080	900	700	68	300ltr (10.59 cu.ft)	1 Per Door	£903	✓
		Int.	500	830	595					
ESS1365	Stainless Steel	Ext.	1080	1365	700	90	380ltr (13.41 cu.ft)	1 Per door	£1,382	✓
		Int.	500	1295	595					