

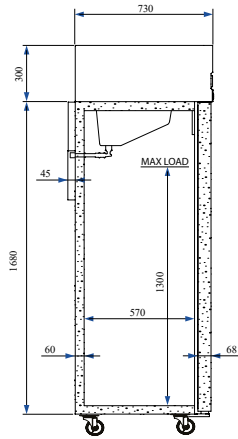
# Slim Heavy Duty Refrigeration

768mm Depth, General Purpose Refrigerators and Freezers

**CAP172SL**



Refrigerators suitable for fresh meat storage



**CEP2144SL**



**FEATURES**

- High grade AISI 304 stainless steel exterior & interior
- 4 x shelves per door, shelf size 530 x 550mm
- Self closing door(s)
- Replaceable door gasket
- Reversible door (single door models)
- Lock as standard
- Heavy duty castors as standard (single door models - castors supplied only, to be fitted on-site)
- Refrigerator models - Epoxy coated evaporator to resist corrosion
- Low maintenance condenser

**TECHNICAL SPECIFICATIONS**

- Controller: Digital controller with temperature display
- Cooling: Ventilated
- Defrost: Automatic
- Refrigerant: R290
- Climate Class: 4 (CFP2144SL)  
5 (all other models)
- Power Supply: 13amp

MODEL	DOOR	TEMPERATURE RANGE	GROSS CAPACITY	EXT. DIMENSIONS (H x W x D mm)	ENERGY RATING	POWER CONSUMPTION	KWH /ANNUM	WEIGHT (kg)	RRP
CAP172SL	1	-2°C ~ +8°C	560L	2115 x 720 x 768	D	526W	693	135	
CBP172SL	1	-10°C ~ -22°C	560L	2115 x 720 x 768	D	598W	2044	144	
CEP2144SL	2	-2°C ~ +8°C	1227L	2115 x 1440 x 768	E	896W	1569	207	
CFP2144SL	2	-10°C ~ -22°C	1227L	2115 x 1440 x 768	D	797W	4124	212	

MODEL	DECIBELS
CAP172SL	57dBA
CBP172SL	61 (65*) dBA
CEP2144SL	59dBA
CFP2144SL	59 (65*) dBA

\* during defrost

